

Children's Art week is continuing, this week's theme is Connecting Across the Generations.



Send a hug

You might not be able to see some of your loved ones at the moment. Maybe you could send them a hug?

You need

- A long piece of paper
- Decorations or pens to write a message.

Instructions:

- Draw around your child, you can include head or just make two long connected arms.
- Write a message and/or decorate.
- Fold and post



Rhyme of the Week The Finger Family



This is a traditional song. It's easy to be inventive and change it to represent your own family. There are two main variations. Tommy Thumb and the Finger Family both share the same tune.

Link to Tommy Thumb- One person singing
<https://www.youtube.com/watch?v=abWFIy0r9Fs>

Link to Tommy Thumb- two people singing
<https://www.youtube.com/watch?v=ypve0HIuJeM>

Link to Finger Family Song
<https://www.youtube.com/watch?v=1RMvYzY8gC8>

Variations:

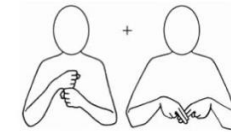
- You could substitute names of your family members and allocate one to each finger.
- You could draw little faces on your fingertips.
- You could hide your hands behind your back when you're singing and just reveal the correct finger when you sing 'here I am.'
- Sit opposite your child.

Ideas for Balloon Play



- Blow and let go...wheeeee
- Bat balloon to each other
- See how long you can keep it in the air
- Make a secret character. Blow the balloon up away from your child. Draw on a character e.g. caterpillar or cat. Deflate, then blow back up in front to child to see the picture emerge.

Makaton symbols and signs of the week



Grandad



Grandma



Grandma and grandad build on the signs for mummy and daddy that we learned a few weeks ago. They're both two-part signs!

Lucinda signs grandma and grandad:

<https://www.youtube.com/watch?v=FU7ZnTsdGeo>

Twitter link to where Lucinda is signing hug!

https://www.google.com/url?sa=t&rc=j&q=&esrc=s&source=web&cd=&cad=rja&uact=8&ved=2ahUKFwiZ3fHnKzqAhURsXEKHaI_BhMQwgsBMAF6BAgHEAc&url=https%3A%2F%2Ftwitter.com%2Fmakatanlucinda%2Fstatus%2F1273125725910990849%2Fvideo%2F1&usq=A0vWaw2_PhHO4AAKskCcXIOI7mfr

Sensory Salad Spinner

Have you seen the wonderful sensory salad spinner idea that Sarah added it to the Kintore Way Twitter feed? If you have a salad spinner already, you just add some lights to weave through the central part. Push and go!

Fantastic for investigating cause and effect.

Further information here:

<https://www.youtube.com/watch?v=ifTBMx4dulk>



As always, these ideas are just suggestions. We hope all our families are keeping well and it's lovely seeing so many of you back at School.