

News

November 2017



Fundraising triumph

Last month members of staff boldly marched across ten London bridges in the pouring rain to raise money to develop our SEND garden and Under-3s outside learning environments. We raised a staggering £1,500 to develop the sensory garden and extend the environment to support the ever increasing numbers of children with additional needs. Volunteers from the nursery community have been busy hammering, digging and building sheds. We'd like to thank Steve Wallington of Benwall Fixing Company Ltd and Curtain Wall & Window Fixing Specialists for donating a new garden shed, and to Sharon Keane (our Premises officer) and her husband Christopher for giving up their free time to replace all of our fencing and for assembling our shed.

Thank you to parent, Justin, who is building a new mud kitchen from recycled materials.

Fundraising is not over at Kintore Way, and if you have a great idea or something to donate, please talk to your child's key person.

Christmas Celebrations

It is nearly December and the end of term is fast approaching. We are already warming up for



our Christmas celebrations and you should have received your song sheets to practice the songs at home. This year we have decided not to perform our Nativity to parents but invite you all to join us for some festive singing on Wednesday 13th December. We ho-ho-hope you can join us!

Under-3s transitions

The Under-3s have been visiting the 3-5 learning environments to help them prepare for the transition over to their new classrooms in January. We've been having loads of fun!

Primary school applications

Time is running out for you to complete your primary school application. The deadline is 15 January 2018. There is a drop in support session on Wednesday 29 November with members of Southwark admissions team who

will answer any questions and support you with the online application. Please come to the hall at 9am-1pm. Please visit www.eadmissions.org.uk to register your child. When you have successfully applied you will receive a number - please bring this to your Key person.

Keeping safe at collection time

Please keep your children close to you when collecting and dropping off at nursery. We have members of staff at the gates and doors to stop children from leaving without their adult. Please understand that they are trying to keep your child safe.

Lunches

If you are running late and want lunch please call and let the kitchen know by 9:30am.

DATES FOR THE DIARY

29 November 2017

Help with primary schools application. Drop in support from 9am - 1pm in the Hall computer room. There will be members of Southwark admissions team to support you with your application and answer any questions you might have.

13 December 2017

Carol concert. Come and join us for our festive singing at 9:20am and 2:30pm.

20 December 2017

Christmas Party for all children at Nursery. Last day before Christmas break. **All children** to attend 9-12pm for the party.

21 December - 2nd January
Christmas holidays

3 January 2018

First day of spring term.

15 January 2018

Primary School application deadline.

25 January 2018

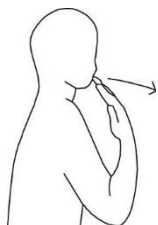
School closed for inset day.

THINGS TO TRY AT HOME

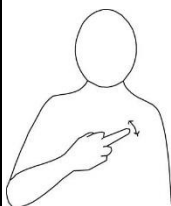
We have been learning Makaton signing at school to support the children's communication. Here are some of the signs we have been learning. Have a go yourself! Signing is usually with right hand but it doesn't matter if you are left handed.



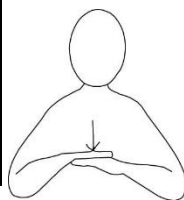
Please Finger tips at lips. Move arm down hinging at elbow to point down to knees.



Thank you Finger tips at lips. Move arm hinging at elbow to point at 45 degree angle from body.



Toilet Cross arm across body. Middle finger makes small up and down movements on chest bone.



Sit Place one hand on top of the other hand and press down.

Urgent

Please label **all** hats, gloves, scarves, coats and clothes with names.

Urgent

30 hour funded childcare codes need to be validated every term to secure your full time place. Visit www.gov.uk/sign-in-childcare-account and update the office.

Urgent

Please clearly **label** your bikes and scooters if leaving them in nursery. Scooters have been going missing. Please **check** that you have the correct scooter and **return** any that do not belong to you.

Wanted

Please bring in any unwanted **plastic bags**. We have no bags to send wet clothes home.

Wanted

Please bring in any unwanted **house phones** for our house in Rainforest.

ATTENDANCE

If for any reason you cannot make it into school, or are going to be late, please call to let us know before 9:30am. You can leave a message on the answerphone or email the

If your child has vomited and/or has diarrhoea, they **must** stay off school for **48hrs** after the last episode. If you are not sure then call to speak to your key person.

If you would like to contribute to the newsletter, please get in touch with Lydia in Rainforest. Pop in, call or email the office.